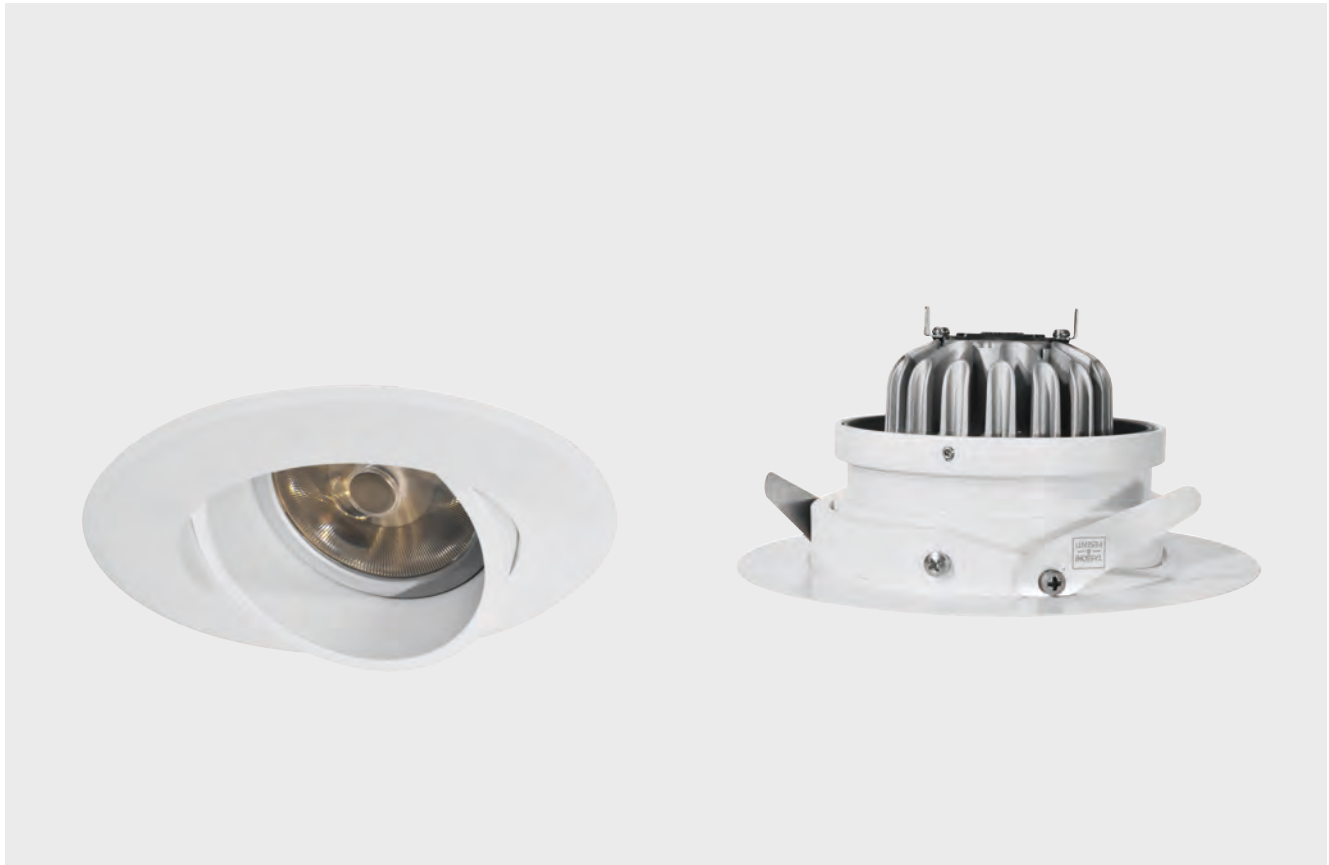


Luxy AR111 Adjustable

CE IP20 CLIII 



Installation

Ceiling recessed luminaire for indoor and outdoor installation.

Technical description

Front ring made of die-cast aluminum, painted with polyester powder.

Harmonic stainless steel springs for installation in false ceiling.

Led module AR111 by Soraa

Electrical Features

Remote power supply not included.
Class III device.

Source Type

LED lamp

Luminaire wattage

12.5W - 18.5W

Colour temperature

2700K - 3000K - 4000K

CRI

80 - on request 90

Beam

8° - 25° - 36°

Driver

Remote

Input Current

12V +/- 1,2V 50/60 Hz.

Insulation class

CLIII

IP rating

IP65

Weight

0.7 kg

Dimensions

Ø 170 x h 95

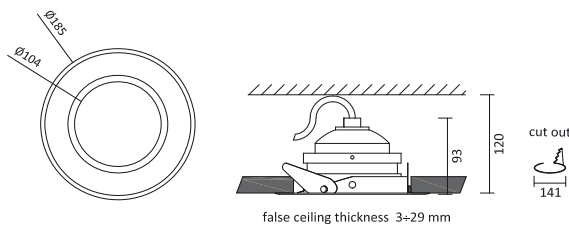
Luxy AR111 Adjustable 12.5W

CE IP20 CLIII



Product Codes

Code	W	Optic	Lm	K	CRI
ALUXYRA61Y	12.5	8°	735	2700	85
ALUXYRA61W	12.5	8°	795	3000	85
ALUXYRA61N	12.5	8°	645	4000	95
ALUXYRA63Y	12.5	25°	735	2700	85
ALUXYRA63W	12.5	25°	795	3000	85
ALUXYRA63N	12.5	25°	645	4000	95
ALUXYRA64Y	12.5	36°	735	2700	85
ALUXYRA64W	12.5	36°	795	3000	85
ALUXYRA64N	12.5	36°	645	4000	95



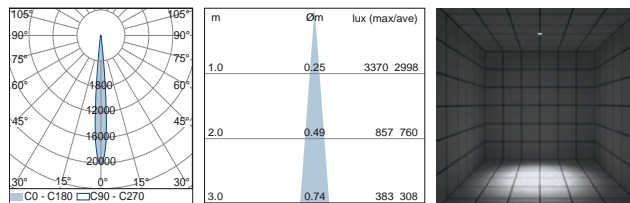
+ Finishing codes

Code	Description
BP	Black powder painted
WP	White powder painted

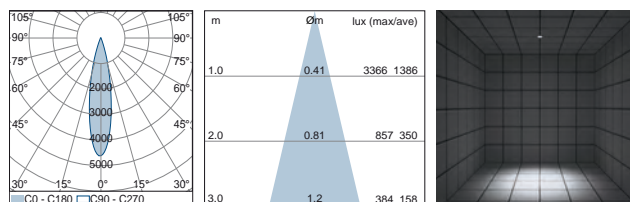
+ Power supply codes

Code	Power supply type
ST0012	Standard - 12V AC
DI0012	DIM1-10 - 12V AC
DA0012	DIM DALI - 12V AC

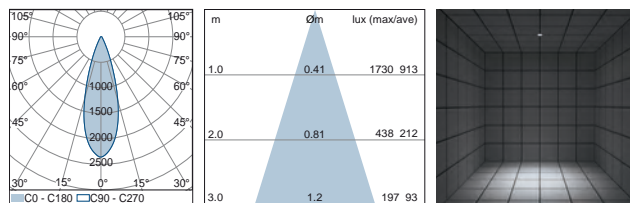
8° 12.5W



25° 12.5W

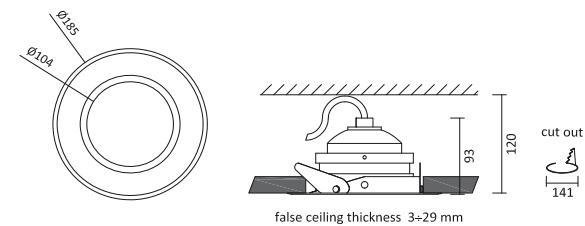


36° 12.5W



Luxy AR111 Adjustable 18.5W

CE IP20 CLIII



Product Codes

Code	W	Optic	Lm	K	CRI
ALUXYRA72Y	18.5	9°	1190	2700	85
ALUXYRA72W	18.5	9°	1280	3000	85
ALUXYRA72N	18.5	9°	1040	4000	95
ALUXYRA73Y	18.5	25°	1190	2700	85
ALUXYRA73W	18.5	25°	1280	3000	85
ALUXYRA73N	18.5	25°	1040	4000	95
ALUXYRA74Y	18.5	36°	1190	2700	85
ALUXYRA74W	18.5	36°	1280	3000	85
ALUXYRA74N	18.5	36°	1040	4000	95

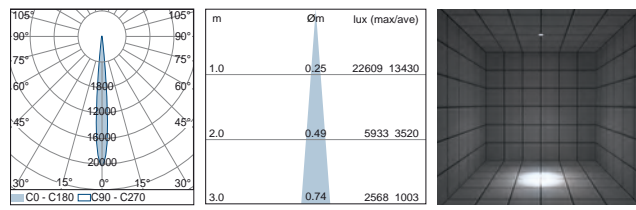
+ Finishing codes

Code	Description
BP	Black powder painted
WP	White powder painted

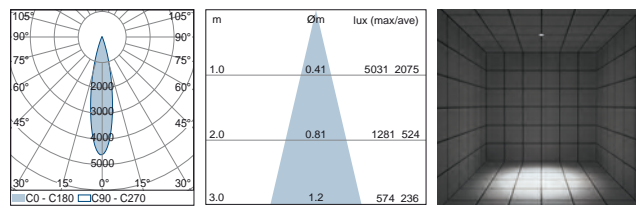
+ Power supply codes

Code	Power supply type
ST0012	Standard - 12V AC
DI0012	DIM1-10 - 12V AC
DA0012	DIM DALI - 12V AC

8° 18.5W



25° 18.5W



36° 18.5W

