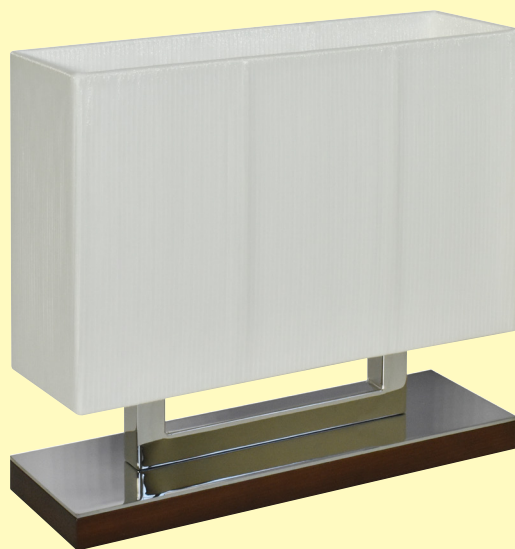


MIAMI TABLE

CE IP20 CLI F



Miami Table Wood



Miami Table Marble

MIAMI TABLE

CE IP20 CLI **Installation**

Floor decorative luminaire for residential, hospitality and retail installation.

Available in a wide range of colour and also material.

Technical description

The base of the luminaire can be made with a wood covered on the upper side with a chrome finished brass plate mirror polished or it can be made with a selected and machined Carrara marble.

Main structure made with brass tubes with the same chrome finish.

Lampshade made of organza or linen fabric.

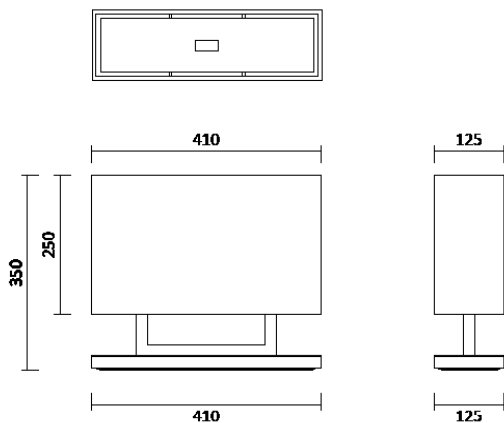
Top cover made of opal polycarbonate or glass.

Electrical Features

Double E27 lampholder.

Class I luminaire.

Source type	2 x LED bulb
Luminaire wattage	2 x max 11W
Colour temperature	2700K
CRI	80
Beam	Diffuse
Input	220-240V 50/60 Hz
Protection class	CLI
IP rating	IP20
Weight	3 kg (wood)
Dimensions	h 350 x l 410 x d 125

**Product codes**

Code	W	Optic	K	CRI
CMIAMITS1Y	2 x Max 11	Diffuse	2700	80

+ Finishing codes - base

Code	Description
WB	Base made of wood
MB	Base made of marble
CB	Custom made base

+ Finishing codes - lamp shade

Code	Description
WO	White organza shade
BO	Brown organza shade
CS	Custom made shade

+ Power supply codes

Code	Power Supply Type
DIR220	Direct feeding - 220-240V